



# Interior Design Portfolio

Studio Hubert Design  
Stephanie Hubert  
2025



*sh* STUDIO HUBERT DESIGN

sh

HI, I'M STEPHANIE,

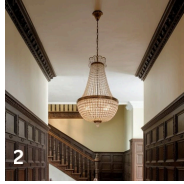
I am passionate about creating spaces that delight our lives and support our overall well-being. I spent the first decade of my professional life as an American Sign Language/English interpreter, and through that work, have encountered the profound importance of connection and belonging. I have loved design since a young age and am thrilled to blend my passion, skill, and desire to create a sense of belonging in my design work.

My design philosophy reflects my deep appreciation for architectural detail, history, and the emotional impact of a well-designed interior. I believe that the spaces we inhabit, both at home and in our communities, have a profound effect on our individual and collective lives, and I am honored to be a part of uplifting those lives through my designs.

I gravitate toward styles that blend traditional craftsmanship with contemporary elements, and I strive to create spaces that feel classic while also being layered with rich personality.

Stephanie Hubert





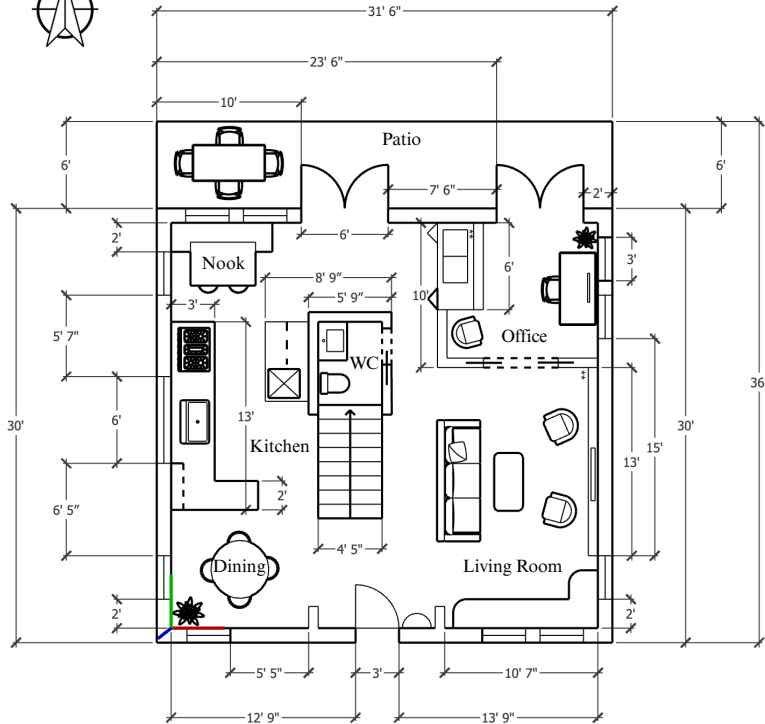
1) Rug, SoHoHome 2) Antique chandelier pendant light, Etsy: AntiquesHine (similar) 3) Halson leather armchair, High Fashion Home 4) Floral wallpaper, Etsy: Truerthings

## MODERN VICTORIAN

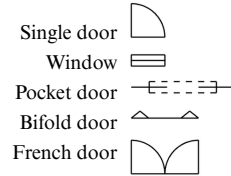
This Modern Victorian concept board seamlessly blends historical elegance with contemporary refinement. It is rooted in the rich, layered aesthetic of the Victorian era and is elevated with clean lines, thoughtful restraint, and a bold, curated palette. Navy, olive green, wine, and soft taupe form the core color palette in this design and keep the space grounded in warmth and timeless sophistication.

Key architectural elements like the wall trim, intricate moulding, and chandelier lighting offer a purposefully old-world backdrop, while modern furnishings and intentional negative space allow the eye to rest and keep the design fresh and relevant.

Ultimately, this design strikes a balance between traditional ornamentation and modern sensibility, honoring the beauty of the past while creating a space that feels warm, layered, and livable for the modern era.



### Symbol Key:



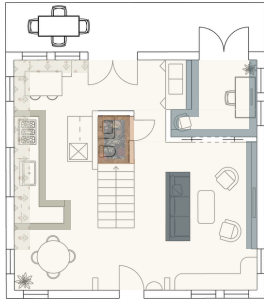
### Notes:

- A Structural Engineer should be consulted prior to any remodel work
- Exterior walls measure 1'
- Interior walls measure 8"
- Windows measure 3' (unless otherwise marked)
- Built-in bookcases marked in the office & living room (\*\*)
- The living room TV is set into the built-in
- Scale: 1/4" = 1'0"

### Project Details:

- Name: IDI Module 4: Floor plan
- Drawing: Ground floor
- Client: Interior Design Institute
- Address: N/A
- Date: January 7, 2026
- Drawing #: 002

sh

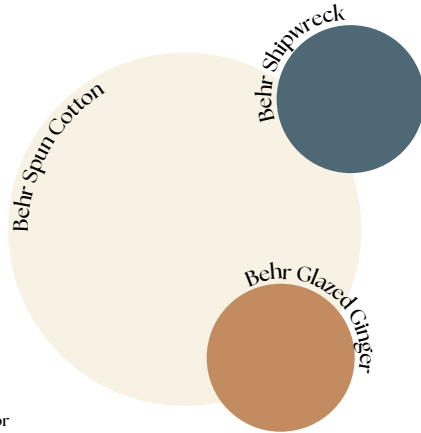


Drawing on the Modern Victorian design aesthetic, the color scheme incorporates a thoughtful mix of rich jewel tones and soft, muted colors to create a style that draws on old world charm while also appealing to modern sensibilities.

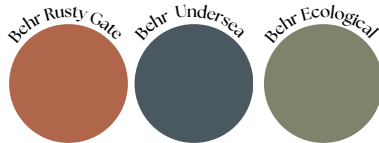
Blues and greens serve as anchors for the color scheme, creating a sense of calm, while the red-orange and yellow-orange accents add warmth and a sense of invigorating energy to the overall feel of the space.

Tone, value, and chroma of each base hue were intentionally chosen to soften the overall aesthetic and ensure harmony in the design. The result is a color palette that is pleasing to the eye and invites a feeling of cozy relaxation.

## Main Painted Surfaces



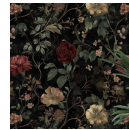
## Accents



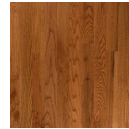
## Wallpaper/Flooring



Milton & King  
Marigold Decorative Textile  
Wallpaper in Antique Rose



Etsy: Truer Things  
Victorian Dark Rose  
Wallpaper



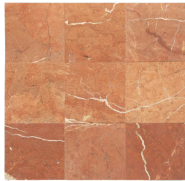
Floor & Decor  
Gunstock Red Oak  
Hardwood

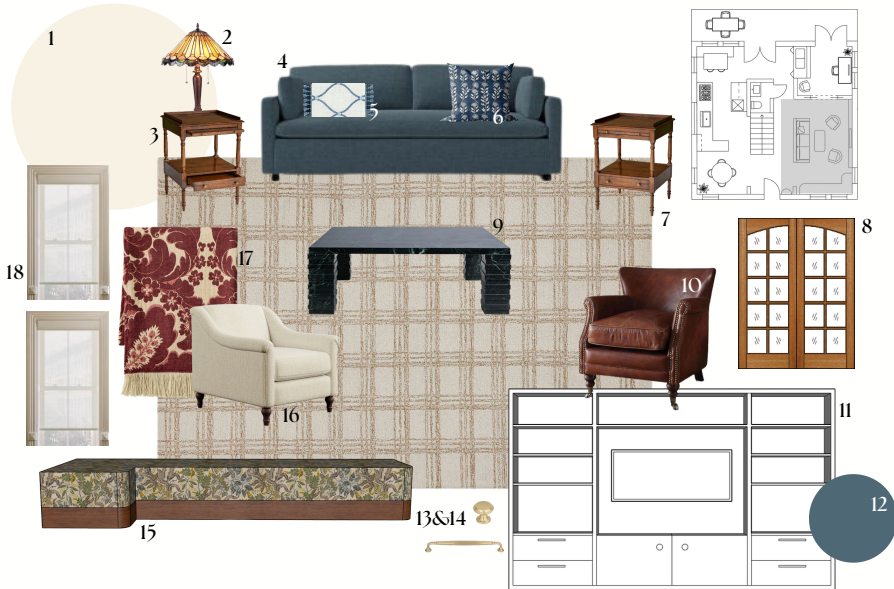


Zia Tile Carrara  
Rosso, Alicante 6x6

*Modern Victorian Mood Board*

sh





## LIVING ROOM

Welcome to the main living space. The design of this space draws inspiration from a Modern Victorian aesthetic, blending rich jewel tones with soft, muted hues along with old-world elements and modern touches. Together, elements like antique side tables and lamps evoke old-world charm while soft textiles and updated furniture silhouettes appeal to modern life. Each fabric and finish has been thoughtfully selected to enhance this vision while creating a space that feels welcoming and effortlessly livable.

The deep blue sofa opposite the custom-built-ins bookshelves anchors the room, while the warm neutral walls and wool rug lend an airy balance.

Natural materials—including leather, wood, marble, and cotton—are intentionally layered for texture and a sense of sophistication. Mixing patterns in the textiles and furnishings introduces dimension and helps tell a rich visual story.

(1) Paint, Behr Spun Cotton YL-W09 (2) Tiffany-style Victorian design table lamp by Chloe Lighting at Overstock (3) Pair of Regency Style side tables, Seller: English Georgian America at Chairish.com (4) West Elm Marin Sofa 86" in Petrol Performance- linen weave (5) Custom Pillow Fabric: 6098412 Williamsburg DEANE EMBROIDERY PORCELAIN 70009 Lattice Embroidered Drapery Fabric Fringe: 4cm, Pale blue tassel trim by Marfitrim on Etsy (6) Modern Indigo Linen Floral Pillow Cover by Alwaysloveslinen on Etsy (7) Polly POL-12 Cream/Sand Wool/Jute Hand-Tufted Plaid Area Rug by Chris Loves Julia x Lolo! (8) F28 French Double Doors by Vintage Doors (9) Emeril Square Coffee Table by Lulu and Georgia (10) Andrea Vintage Top Grain Leather Accent Chair by Living Spaces. (11) Custom-built-in bookshelves (12) Paint Behr Shipwreck S470-6 (13) Grace Collection Barrow Hardware Knobs (TK1050HB) in Honey Bronze by Top Knobs (14) Grace Collection Barrow Pulls (TK1055HB) in Honey Bronze by Top Knobs (15) Custom window bench: upholstery fabric (15) Cotton Fougere Sepia FDG3109/02 by Designer's Guild (16) Josie Chair in Ivory: performance Heathered Basketweave by Pottery Barn (17) Avala Damask Throw by Williams Sonoma Home (18) Custom Natural Unlined Roller Shade in Snow White by West Elm



## OFFICE

Stepping into the office, we're greeted by a calm and restorative atmosphere. Continuing the influence of Victorian elegance, this space is intentionally designed to promote calm and creativity—a place where focus and inspiration coexist.

Color-drenched walls and built-in bookcases create a cozy environment. Ample natural light from the windows and French doors ensures the space feels both grounded and refreshing.

The home's overarching color palette is represented, but in a unique way. A variety of blues are used with paint, textiles, and window trimmings, and then touches of warm browns and rusty reds are incorporated in the wood elements and upholstery. Soft ambient lighting and lush indoor plants complete the space, making it feel both functional and dynamic.

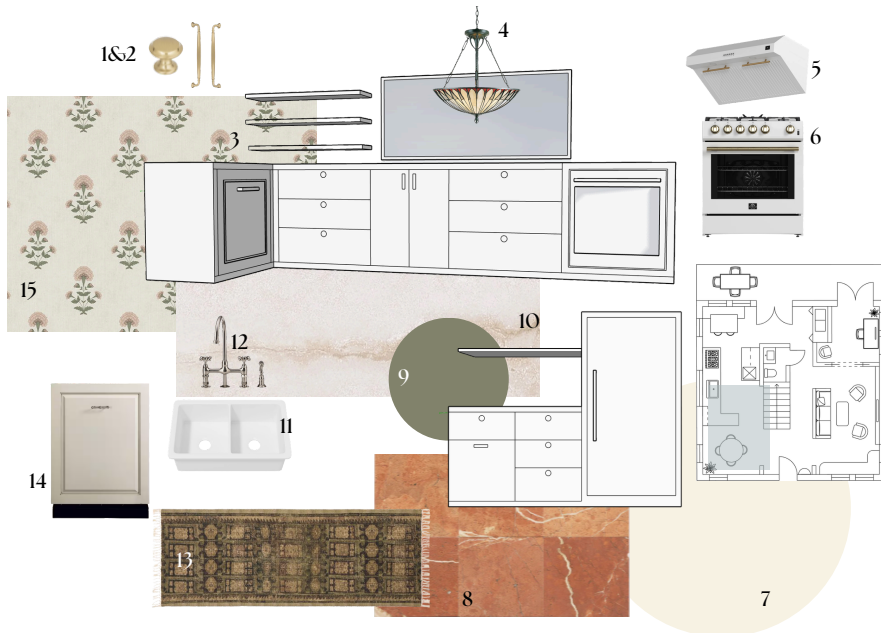
(1) Behr Shipwreck S470-6 (2) F28 French Double Doors by Vintage Doors (3) Lacy Tree Philodendron (4) Utility Objects Asymmetrical Planter in charcoal by West Elm (5) Archivist Writing Desk by Hooker Furniture from PERIGOLD (6) Custom Double Pinch Pleat Curtains (7) Fontana Chambrey fabric, Code: FDG3J21/O2 by Designer's Guild (8) Custom Natural Unlined Roller Shade in Snow White by West Elm (9) Arnold Desk Chair in Sonoma Chestnut from FourHands (10) European Novelty Cashmere Throw, Marrakesh Iklat at William Sonoma (11) Behr Spun Cotton YL-WO9 (12) Jaris Blue Quilt Check Rug 8x10 by Article. (13) Carazo Linen Pillow in Peach by Lulu&Georgia (14) Daphnis Cinnamon Velvet Sofa, 1-Seater by Daals (15) Anwar Marble Floor Lamp by Joon Loloi (16) Custom built-in bookcases (17) Grace Collection Barrow Hardware Pulls (TK1055HB) in Honey Bronze by Top Knobs



## WATER CLOSET

Small spaces offer the perfect opportunity to make a bold statement, and this half bath embraces that philosophy. While the color scheme ties back to the home's overall design, the tones and patterns here are intentionally more saturated and expressive. The mosaic floor tile, bold floral wallpaper, and painted wainscot paneling come together to form a bold composition in a compact footprint. A fluted flush-mount light fixture diffuses light softly across the room, complementing the moody palette. Since this water closet is primarily for guests and doesn't have the same task lighting needs, ambient lighting was chosen to enhance its intimate atmosphere and highlight the refined finishes. Unique hardware details and a modern artwork complete the look.

(1) Pierce & Ward Pleated Flush Mount by West Elm (2) Contemporary Scalloped Rectangle Wall Mirror in Matte Black by Moon Mirror (3) Truer Things Victorian Dark Rose Wallpaper from Etsy (4) Pine Finger Jointed Chair Rail Moulding by Woodgrain Millwork at Home Depot (5) PureBond Beaded Plywood Project Panel by Columbia Forest Project at Home Depot (6) Behr Glazed Ginger PPU3-13 (7) Famille Rose Ceramic Soap Dispenser by William Sonoma (8) The Sloane Stripe Trim Soft Cotton hand towel in White by Anthropologie (9) Claudia Towel Ring by Anthropologie (10) Victorian Widespread bathroom sink faucet w/ metal cross handles in Brushed Brass by Randolph Morris: Vintage Tub (11) Theodora 36" Single Vanity - Walnut, calacatta Marble, 8" faucet drilling - by Rejuvenation (12) Belle Drop Pulls by Purdy Hardware (13) Mosaic Zellige Tile: Rubric 5 in Burnt Sugar and Amber by Zia Tile (14) Sonoma Handwoven Performance Rug in Ivory by RugsUSA (15) Château One-Piece Elongated Dual-Flush Toilet by AllModern (16) Rinna Rattan Collection - Waste Bin by Rejuvenation (17) Golden Toilet Paper Holder from Zara Home (18) Moon River Terracotta Artwork by Roseanne Kenny from Four Hands



## KITCHEN

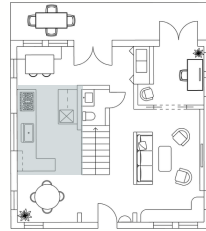
The kitchen serves as the heart of the home, inviting people to gather and connect. For this reason, a calm but bright color palette was chosen with textured wallpaper and custom cabinetry that integrates the large appliances. This design creates a cohesive flow with a touch of whimsical flair. The lower cabinets are painted in a grounded mid-tone green and are balanced by soft cream walls that offer a place for the eye to rest. Open wood shelving provides both functional storage and a stage for displaying ceramic dishware and other meaningful objects.

The tiled floor, Persian runner, and wallpaper introduce lively patterns and personality, keeping the spirit of the kitchen vibrant and ideal for entertaining. Marble countertops and brass hardware complete the design, achieving a harmonious blend of beauty and practicality.

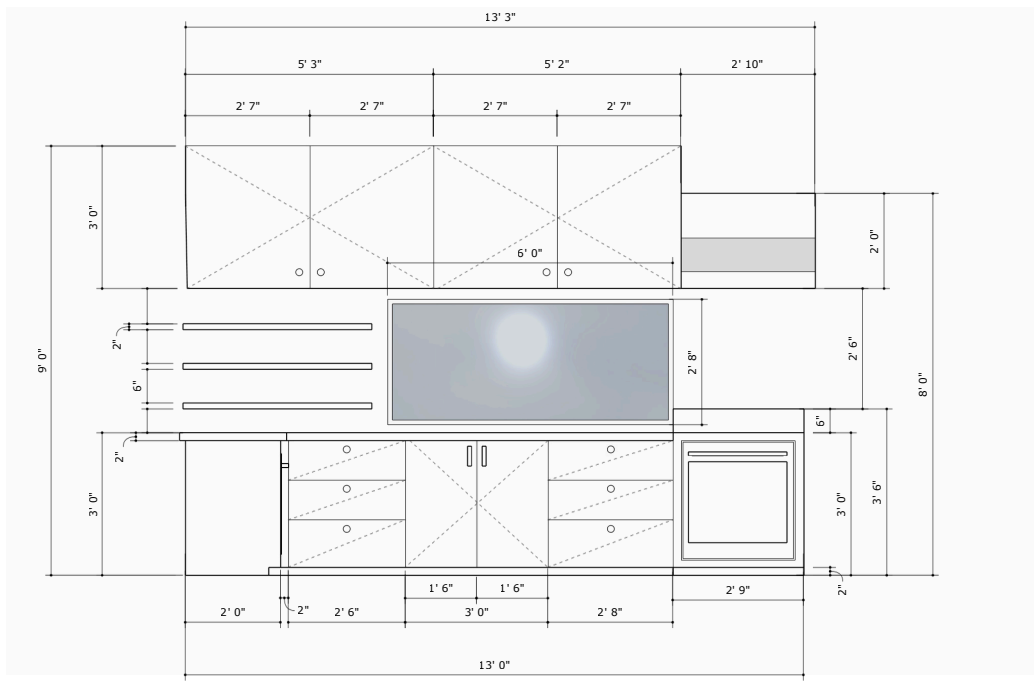
(1) Grace Collection Barrow Hardware Knobs (TK1050HB) in Honey Bronze by Top Knobs (2) Grace Collection Barrow Hardware Pulls (TK1055HB) in Honey Bronze by Top Knobs (3) Custom kitchen cabinetry with integrated appliances (refrigerator and dishwasher) (4) Art Nouveau Stained Glass Pendant - Vintage Bronze 25" x 22" by House of Antique Hardware (5) FORNO Espresso Bari 30" 400 CFM Under Cabinet Range Hood (White with Antique Brass) by Premium Home Source (6) FORNO Espresso Leonardo 30" 5 cu. ft. Gas Range (White with Antique Brass) by Premium Home Source (7) Behr Spun Cotton YL-W09 (8) Zia Tile Carrara + Rosso, Alicante 6x6 (9) Behr Ecological S380 6 in Satin (10) Wilsonart Aluma Marble Countertop in White by DesignShop (11) Oslo Double Bowl Fireclay Undermount Kitchen Sink By Eridanus at WayFair (12) Gooseneck Bridge Style Kitchen Faucet in Brushed Brass, Metal Lever Handle by Randolph Morris at Vintage Tub and Bath (13) Camelia Reversible Persian Rug - Runner 2.5x7' by West Elm (14) GE Panel Ready 24" Built-in Top Control Dishwasher at Home Depot (15) Milton & King - Marigold Decorative Textile Wallpaper in Antique Rose



KITCHEN



1) Wallpaper - Milton & King - Marigold Decorative Textile Wallpaper in Antique Rose 2) Wall and Trim Paint - Behr Spun Cotton YL-W09 3) Cabinet Paint - Behr Ecological S380-6 in Satin 4) Hardware- Grace Collection Barrow Hardware, Knobs TK1050HB - 1 1/4 Inch Honey Bronze, Pulls TK1055HB - 1 1/16" & 1 3/16" Honey Bronze 5) Countertop and Continuous Backsplash - Wilsonart Aluma Marble White SKU #101377376 6) Floor Tile- Zia Tile Carrara + Rosso, Alicante 6x6





Thank you!

- 📍 Austin, TX, USA
- 🌐 [studiohubertdesign.com](http://studiohubertdesign.com)
- ✉️ [stephanie@studiohubertdesign.com](mailto:stephanie@studiohubertdesign.com)
- 📷 [@studiohubertdesign](https://www.instagram.com/studiohubertdesign)
- 📌 [pinterest.com/studiohubert/](https://www.pinterest.com/studiohubert/)